



Garden Grove Unified School District

Modernization Status Update January 2011

Time for Facilities Modernization

- Measure “A” Update
- Planning Process
- Plan Approval Process
- State Funding Approval Process
- Closeout of Previous Projects
- Questions

First and Foremost

MEASURE A School Bond

Thank You

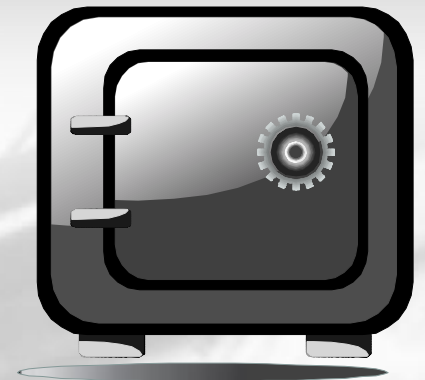
- Initiators
- Supporters
- Voters
- Community
- All Others involved



Bonds
Sold

- First Round
- \$130,000,000
- First portion of District match to State portion
- 40% District match
- 60% State funding of the 100% eligibility

MEASURE
A
School Bond



One of the Current Phases

So Many Considerations:

- Budget
- Schedule and Timelines
- Agency Approvals
- Scope
- Desired Outcome



Other Planners "On-Board"

- Architects
- Engineers
- Project/Construction Managers





Budget

Eligibility with the State establishes the initial overall project budget for each site

Example: Elementary School “A”

Eligibility	\$ 1,000,000	Total Project Budget
State Share	\$ 600,000	60%
District Match	\$ 400,000	40%

Funding Requirements	\$ 1,000,000	Total Project Budget
Construction Costs	\$ 600,000	60% Required “Hard Costs” (70% initial planning)
Other Project Costs	\$ 400,000	40% Project Related “Soft Costs” (30% initial planning) Architects, Engineers, Inspectors, Plan-check fees, Testing Labs, etc.

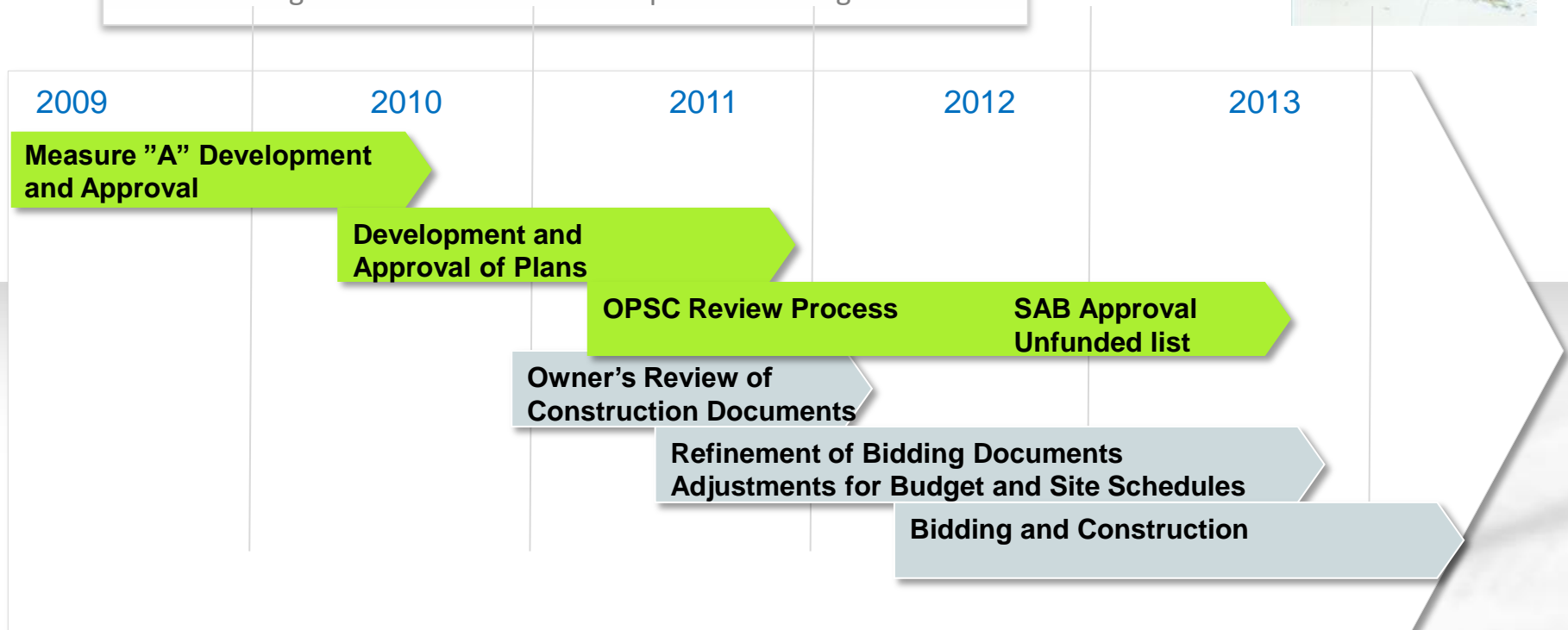
Additional Grants Available		
Initial Eligibility	\$ 1,000,000	Initial Total Project Budget
Add'l FLS/ACS	\$ 180,000	Potential Budget Increase
Add'l 50 yr. old utility	\$ 20,000	Potential Budget Increase
	<u>\$ 1,200,000</u>	Revised Total Budget

Participation costs would increase respectively



Schedule

Many different timelines relative to approvals have been key in establishing the schedule. Concurrent paths are being utilized.



 Expedited Priority Path for State Funding

 Concurrent Path to Obtain Value and Desired Outcome

Agency Approvals

CDE, DSA, OC Health, OPSC

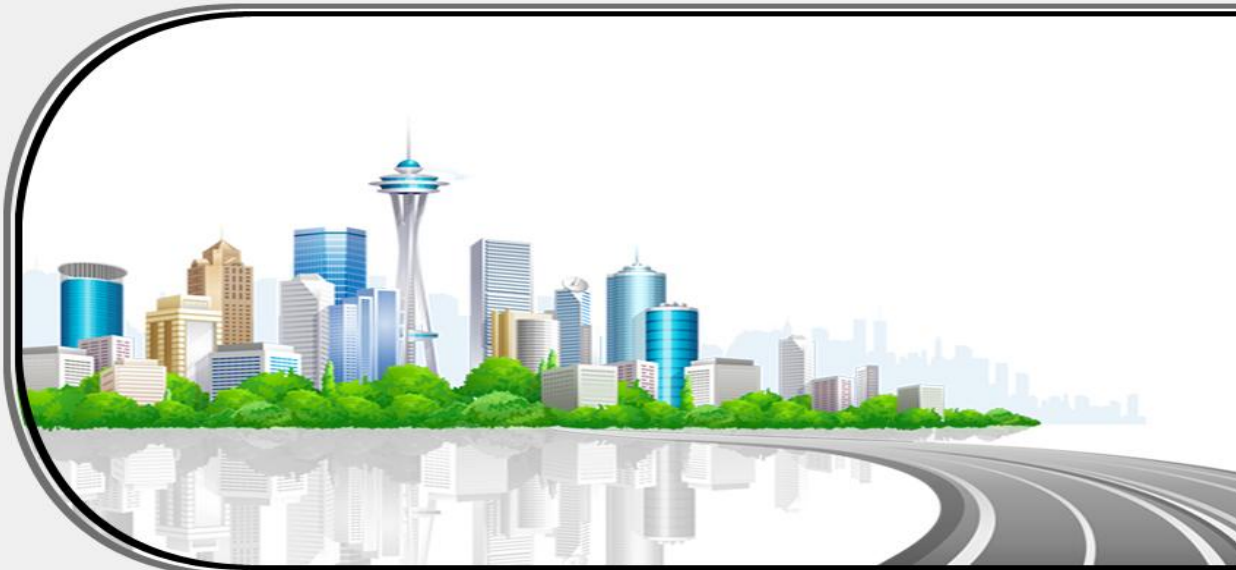
- CDE Plan Approval is complete for almost all sites
- DSA Review and Approval is our current phase
- OC Health (as needed depending upon scope)
- OPSC (State Funding Approval Agency)



Scope

Code requirements established the initial scope. Any remaining budget is focused upon basic site requirements

What should we expect?



Budget determines that we will stick with the basics ... no glitz, no glamour, no bling, just proper planning of basics.



Scope

Code requirements established the initial scope. Any remaining budget is focused upon basic site requirements



Code Requirements and Infrastructure

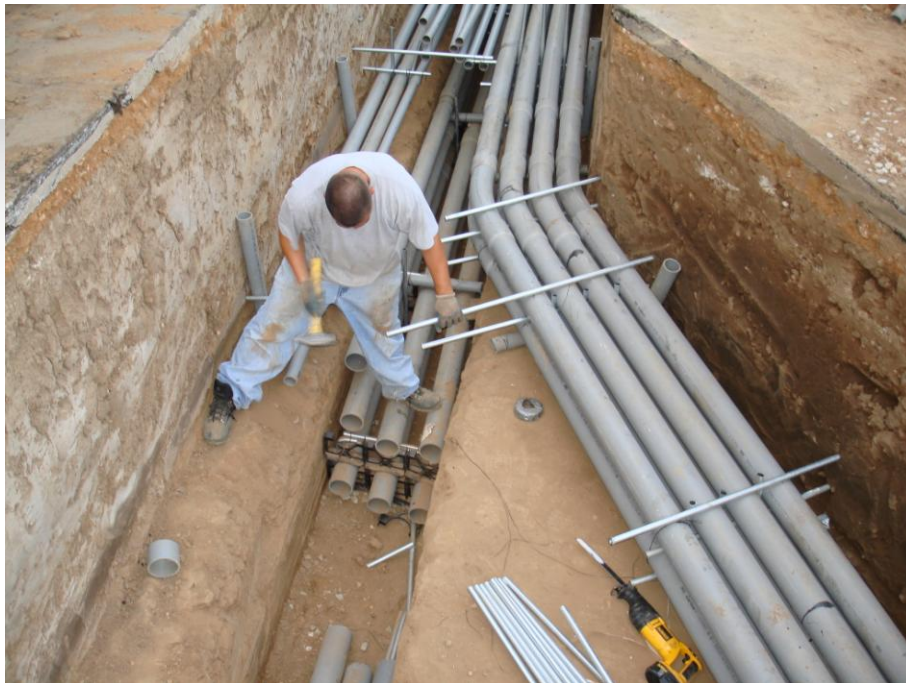
- **Code Requirements:**
 - Structural Safety
 - Fire and Life Safety
 - Access Compliance (ADA)
 - Health Department
 - Plumbing Upgrades
 - Electrical Upgrades
 - Other Code Upgrades
- **Basic Services - Highest Priority (*keeping the lights, water and heaters on*)**
 - Replace Deteriorated/Aged:
 - Electrical Feeders
 - Electrical Equipment
 - Gas Plumbing
 - Domestic Water Plumbing
 - Sewer Plumbing
- **Additional Services (*as budget allows*)**
 - Electrical Service Upgrade (*for future capacity*)
 - Site Specific Replacement Needs

Scope

Code requirements established the initial scope. Any remaining budget is focused upon basic site requirements

What should we expect?

- *New essential utility corridor / trench*
- *Updated fire alarm systems*
- *Accessibility accommodations*
- *Safer sites with updated utilities*



Desired Outcome

Utilizing every dollar for the best outcome for the students



More Specifically:

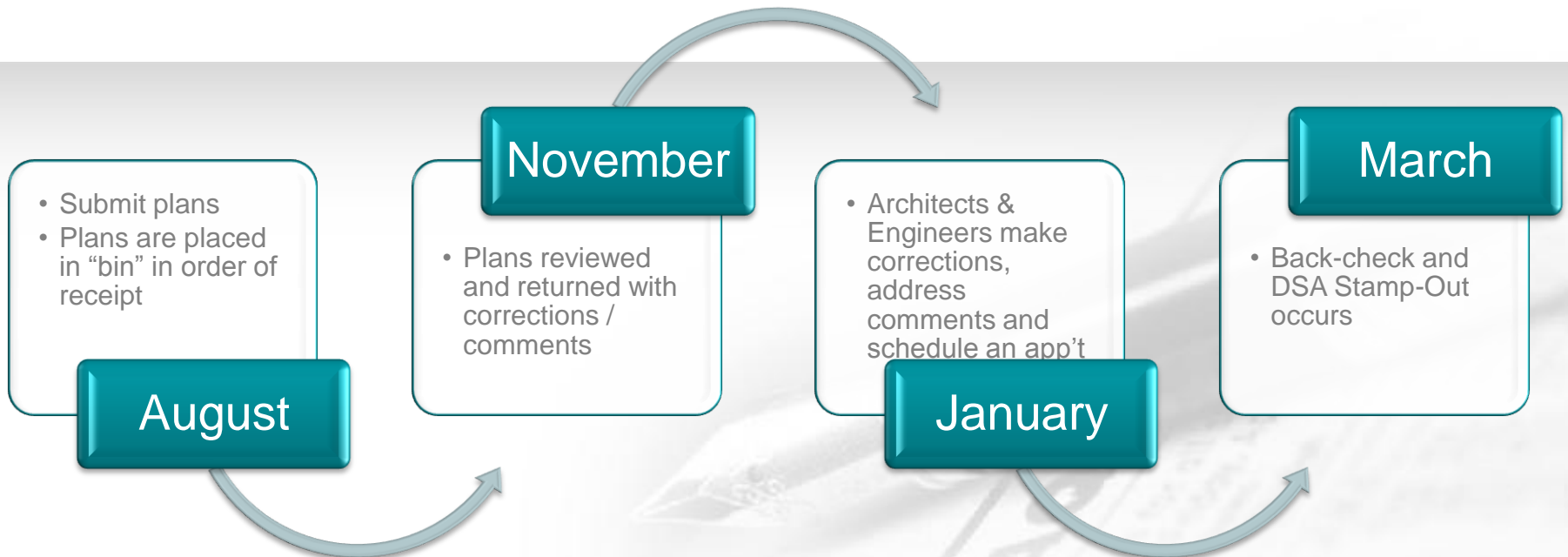
- *To provide a better and safer educational environment for all students*
- *To utilize each site's budget for its most essential needs*
- *To have achieved the most value for the budget*
- *To ensure students receive the best possible outcome*



DSA - Current Phase



DSA Process Diagram (Estimated Example)



OPSC submittal



Achieve Other Approvals

- CDE
- DSA

Compile Submittal

- Application
- Plans
- Estimates
- Grant Worksheets

Submit Package

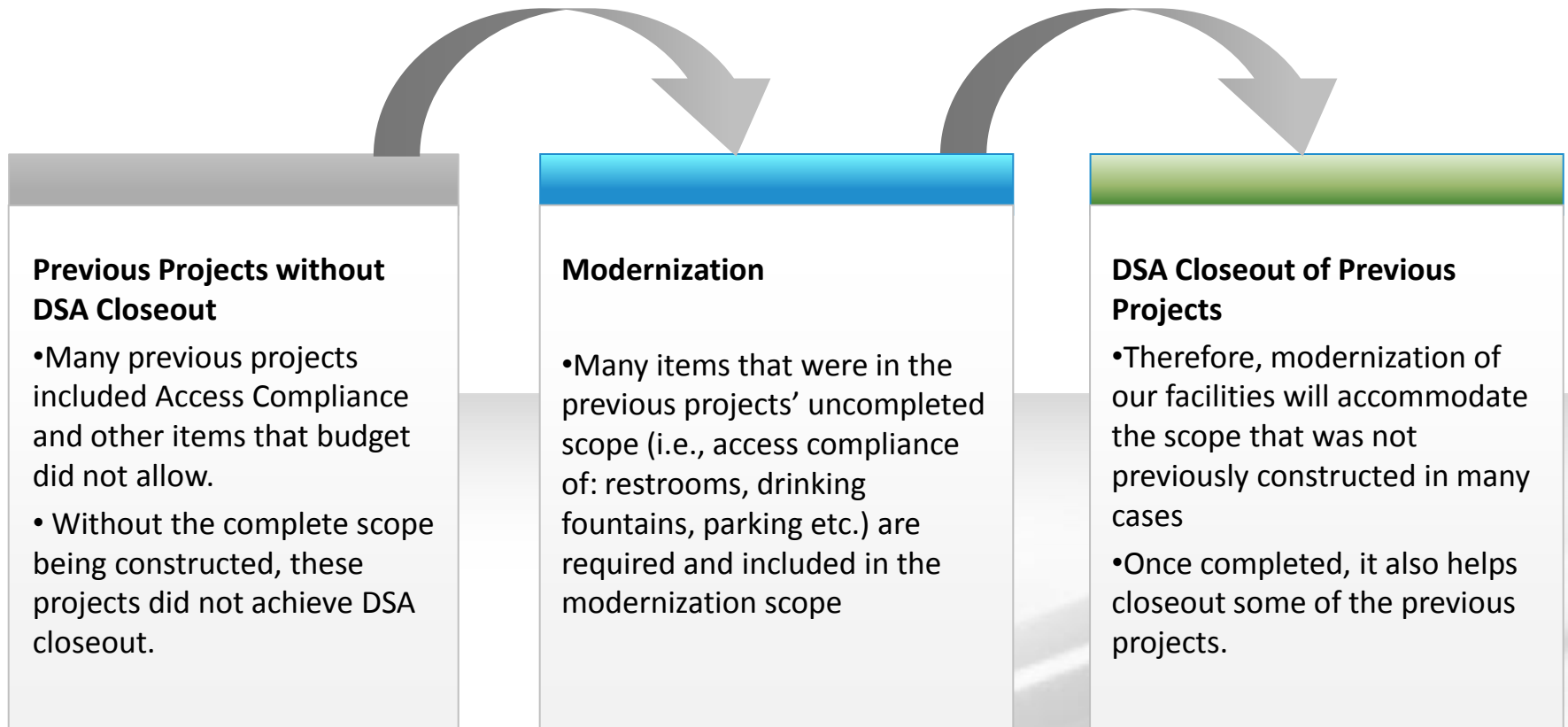
- Application reviewed / accepted
- Establish place in line



OPSC submittal, our place in-line



- Submittal accepted (review)
- Establish place in-line
- Each application is separate (each site)
- Await SAB (State Allocation Board) approval
- Once approved, placed on “Allocated – Unfunded List”
- Once funded, fund release forms may be submitted when 50% of the 60% (required construction budget) is under contract or completed. District receives State’s share
- Approximately \$800,000,000 of “Prop. 1D” funding is remaining. We are seeking approximately \$300,000,000.



Questions?

A close-up, slightly blurred photograph of a silver fountain pen with a black barrel, lying diagonally across a document. The document has the word 'Chicago' printed in a large, bold font. The background is a soft, out-of-focus light gray.



Thank You!



Acronyms

ACS
ADA
CDE
DSA

Access Compliance Services
Americans with Disabilities Act
California Department of Education
Division of the State Architect

FLS
OC Health
OPSC
SAB

Fire and Life Safety
Orange County Health Dept.
Office of Public School Construction
State Allocation Board